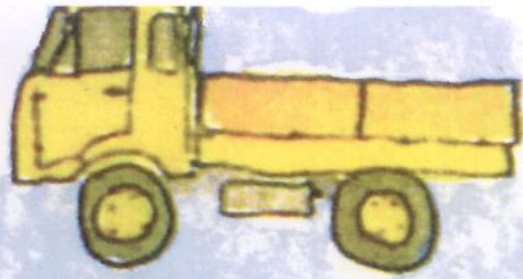
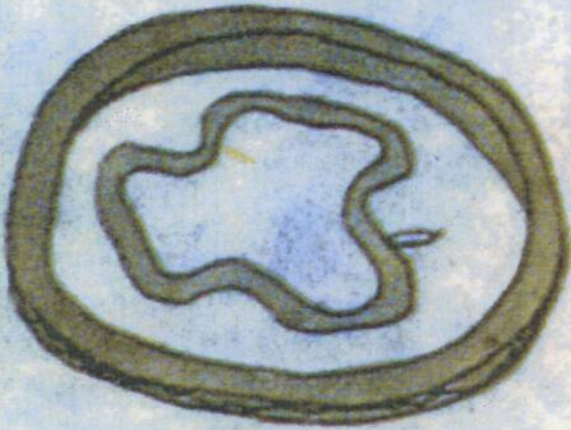




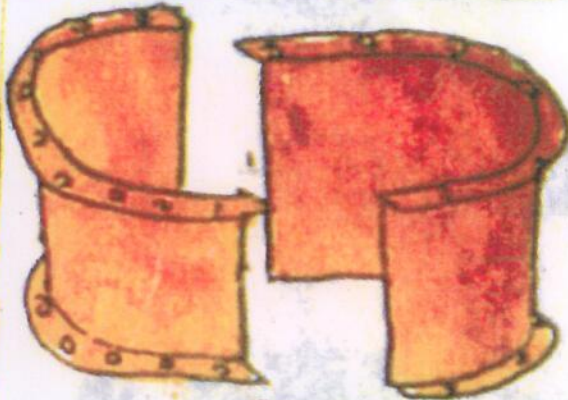
\$2200 LAND ROVER
SPARES FOR
2 YEARS' OPERATION



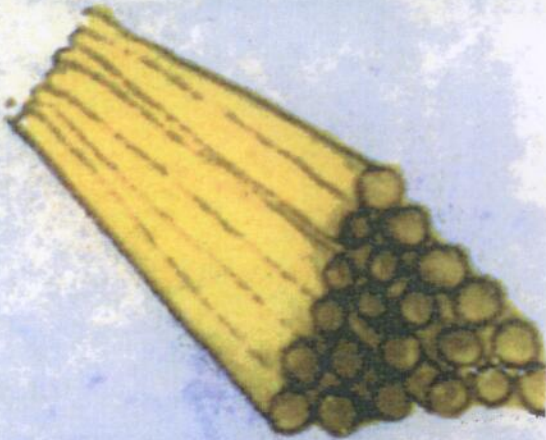
\$40,000 TRUCK
TO TRANSPORT
HEAVY EQUIPMENT
TO WELL SITES.



\$8 BICYCLE TIRE &
INNER TUBE



\$2600 SET OF MOULDS
FOR LINING
WELLS WITH CONCRETE



\$1500 KILOMETER 2"
PLASTIC PIPE



\$10
STRONG HAMMER